

Fund structures: CCFs/ Common Contractual Funds

Irish investment fund products can be constituted in various legal forms. A range of factors can influence the choice of legal vehicle, including tax treatment, risk spreading requirements, local market requirements and market preferences.

The structuring options include a Common Contractual Fund (CCF), an Irish Collective Asset-management Vehicle (ICAV), a Variable Capital Company (VCC), a Unit Trust and an Investment Limited Partnership (ILP). This briefing looks at the CCF, and is part of a series on each of the above Irish fund structuring vehicles.

What is a CCF?

A 'common contractual fund' is defined in the European Communities (Undertakings for Collective Investment in Transferable Securities) Regulations 2011 (**UCITS Regulations**) as a 'collective investment undertaking being an unincorporated body established by a management company under which the participants by contractual arrangement participate and share in the property of the collective investment undertaking as co-owners'.

Many multi-national pension schemes seek to achieve economies of scale and efficiency of operation by pooling pension fund assets into one entity. For such pooling to successfully take place it is imperative that the pooling vehicle is tax transparent (i.e. that the income and gains of such vehicle are treated as arising or occurring to the investors and not to the vehicle itself) in order to ensure that the tax status of the pension schemes is not prejudiced and that the efficiencies of a pooling vehicle are not negated by detrimental tax treatment. CCFs are, under Irish law, tax transparent vehicles which may be established for such purpose.

CCFs are also used for asset pooling where investors are not pension funds but are institutions or other structures pooling their assets into a single fund vehicle.

How is a CCF created?

A CCF is formed by a contractual deed between the manager and the depositary whereby investors participate and share the property of the fund as co-owners of the assets of the fund. Each investor holds an undivided co-ownership interest as a tenant in common with the other investors. The deed of constitution may be drafted to provide that income is distributed on an annual basis so as not to prejudice the tax transparency of the vehicle in certain jurisdictions. The depositary will be a party to the deed of constitution to specifically acknowledge its terms and the obligations at law of a depositary. The depositary is not a trustee and its obligations will be more precisely defined in a separate depositary agreement.

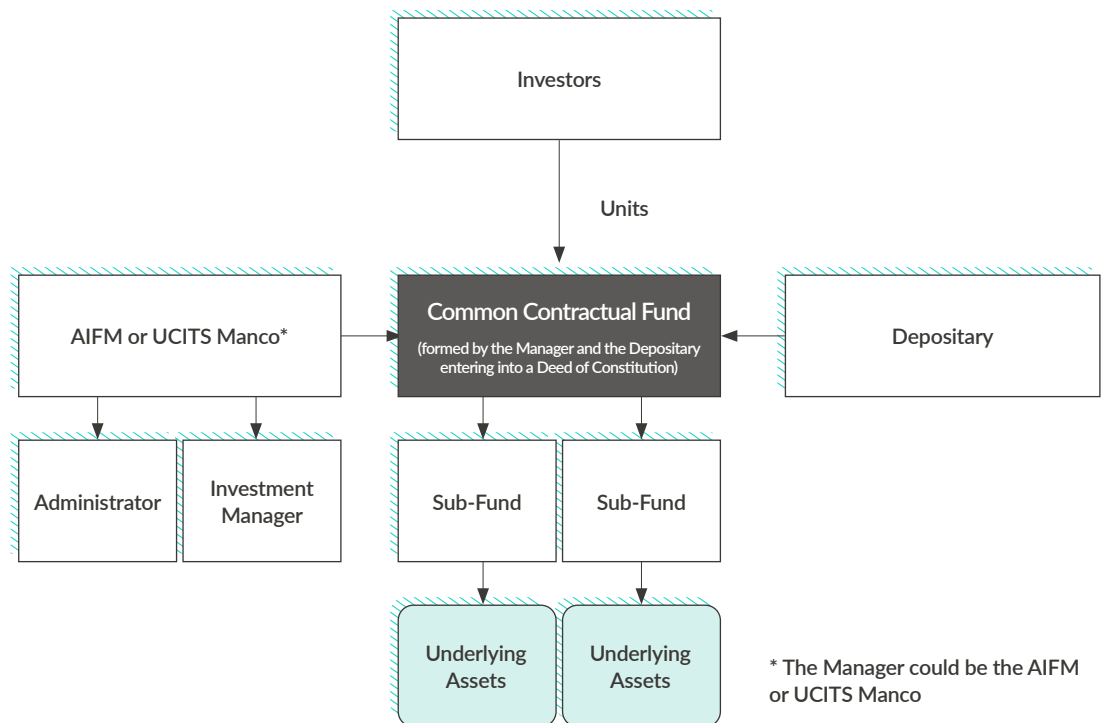
CCFs are tax transparent, meaning that income and gains are treated as accruing directly to each investor, as if the income or gains had never passed through the fund. On that basis, double taxation treaty reliefs between the investor's home jurisdiction and the jurisdiction in which the underlying investments are based should be available.

How is a CCF structured?

The CCF is an unincorporated body established by a management company under a contractual deed whereby the investors participate as co-owners of the assets of the fund. Its characteristics are closely aligned to that of a unit Trust. The CCF is available to institutional investors only.

The CCF is an unincorporated entity without a separate legal personality. It cannot assume liabilities so the manager and the depositary contract on its behalf.

CCF/ Common Contractual Fund



Regulatory regimes

A CCF may be established as a UCITS (in which case it must be open-ended). UCITS are subject to the UCITS regime (which includes the Central Bank of Ireland’s UCITS Regulations) and the provisions of the Investment Funds, Companies and Miscellaneous Provisions Acts 2005 and 2020.

A CCF may be authorised as an Alternative Investment Fund (AIF) under the Investment Funds, Companies and Miscellaneous Provisions Acts 2005 and 2020 in one of two categories:

- A Retail Investor AIF (RIAIF) which may be marketed to retail investors.
- A Qualifying Investor AIF (QIAIF) which may be marketed to Qualifying Investors.

Both RIAIFs and QIAIFs are subject to the AIFMD regime (which includes the Central Bank of Ireland’s AIF Rulebook) and the provisions of the Investment Funds, Companies and Miscellaneous Provisions Acts 2005 and 2020.

Liquidity

CCFs may be open-ended or, if authorised as RIAIFs or QIAIFs, may have limited liquidity or be closed-ended.

Umbrella/ Single fund/ Segregated Liability between sub-funds

CCFs may be single fund structure or an umbrella

fund with multiple sub-funds and with segregated liability between sub-funds.

- What do investors hold?

Participants (otherwise known as unitholders) in CCFs hold co-ownership rights in the property and assets of the CCF represented by units. The liability of unitholders shall be limited to the amount contributed or agreed to be contributed for units.

Main advantages

- Investing via a CCF provides advantages of scale which, in turn can deliver:
 - » lower administrative burden and costs
 - » lower custody costs
 - » consistent investment management across a larger pool of assets
 - » diversification
 - » fund rationalisation
 - » reduced capital requirements

- benefits of oversight, governance and risk management which flow from a regulated structure
- enhanced investor returns due to tax transparency and economies of scale
- increased distribution (more share classes investing into same mandate).

Points to note

The income and gains of a CCF are treated as accruing directly to the investors. Therefore, there is no exposure to Irish tax for investors who are otherwise outside the scope of Irish tax. A CCF is tax transparent under Irish law so as to facilitate the CCF investor in obtaining relief under the terms of a double tax treaty between their home jurisdiction and the jurisdiction where the withholding is suffered, effectively ignoring the existence of the CCF.

Our team



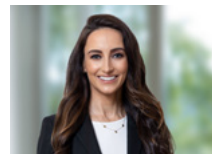
Stephen Carson
Partner and Head of Asset Management & Investment Funds
+353 1 649 2165
scarson@algoodbody.com



Michael Barr
Partner
+353 1 649 2327
mbarr@algoodbody.com



Kerill O'Shaughnessy
Partner
+353 1 649 2422
koshughnessy@algoodbody.com



Lorena Dunne
Partner
+353 1 649 2142
lodunne@algoodbody.com



Chris Bergin
Partner
+353 1 649 2021
cbergin@algoodbody.com



Eimear Keane
Partner
+353 1 649 2485
eikeane@algoodbody.com



Nollaig Greene
Knowledge Lawyer
+353 1 649 2359
ngreene@algoodbody.com



Yvonne McGonigle
Knowledge Lawyer
+353 1 649 2734
ymcgonigle@algoodbody.com

Disclaimer: © A&L Goodbody LLP 2025. The contents of this document are limited to general information and not detailed analysis of law or legal advice and are not intended to address specific legal queries arising in any particular set of circumstances.